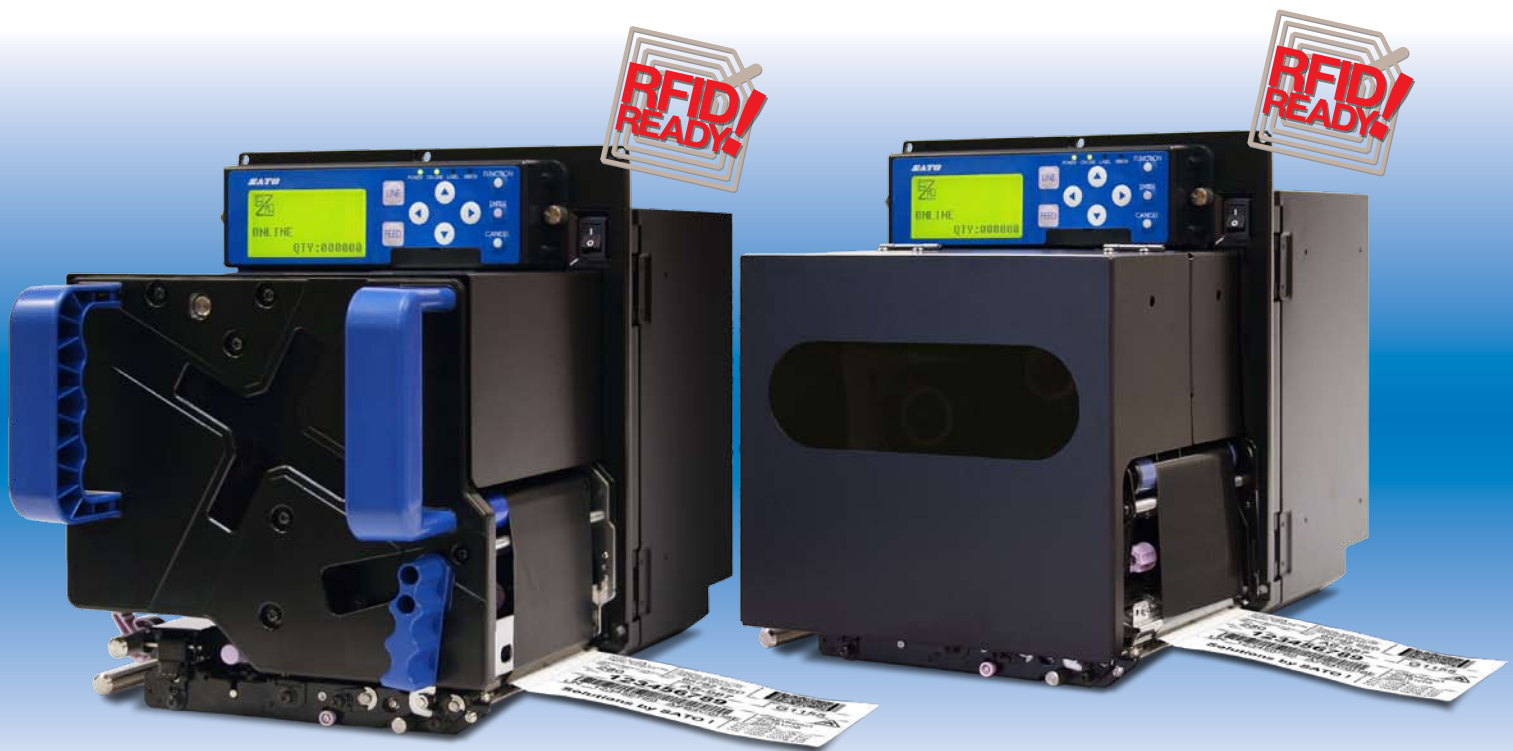


S84 Series **OEM Print Engine**

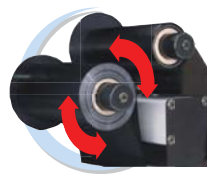
Industry Leading Performance in Print & Apply Systems



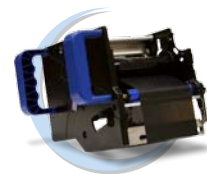
Large-LCD display and icon-driven user interface makes operation easy and intuitive



Available in 203, 305 or 609 dpi in an interchangeable printhead design



1,000 m ribbon capacity & bi-directional ribbon drive offers larger production runs & greater ribbon compatibility



All-new optional ribbon saver and ribbon cassette



16 ips print speed, 16 MB of RAM and state of the art processor get the label where you need it when you need it

General Specifications

MODEL	S8408	S8412	S8424
PRINTING SPECIFICATION			
Print Method	Thermal Transfer/Direct Thermal		
Print Resolution	203 dpi (8 dpmm)	305 dpi (12dpmm)	609 dpi (24 dpmm)
Print Speed	4 to 16 ips	4 to 14 ips	2 to 6 ips
Max. Print Area	Width	4.09" (104 mm)	
	Length	98.4" (2,500 mm)	59.0" (1,500 mm)
MEDIA SPECIFICATION			
Sensor Type	Adjustable Gap (See-through) Sensor, Reflective Sensor		
Media Type	Die-Cut Labels, Waste Removed, Roll, 0.125" gap		
Media Size	Width (incl. Liner)	0.5" – 5.15" (13 mm - 131 mm)	
	Length	0.6" (15 mm) to Max. Print Area	
	Thickness	0.002" - 0.012" (0.05 mm - 0.31 mm)	
Ribbon (CSI/CSO)	Width	0.98" – 5.0" (25 mm - 128 mm)	
	Length	Max. 3,280' (1,000 m)	
Ribbon Saving	Factory Option		
Ribbon Cassette (Quick-Change)	Factory Option (uses std. ribbon)		
MEMORY/PROCESSING			
Processor	32-bit RISC		
Memory	4 MB Flash ROM, 16 MB SDRAM		
Receive Buffer	2.95 MB max.		
Optional Memory	Compact Flash		
Real Time Clock	Standard		
FONT / SYMBOLOGIES			
Internal Fonts	Standard Fonts	XU, XS, XM, XB, XL, Outline, OCR-A, OCR-B	
	Raster Fonts	CG Times (Serif), CG Triumvirate (San Serif)	
Barcode Symbologies	Linear	UPC-A/E, EAN-8, EAN-13, Code 39, Code 93, Code 128, Codabar, MSI, Bookland, Industrial 2/5, Interleaved 2/5, Matrix 2/5, Postnet™, GS1-128, GS1-DataBar™, Intelligent Mail® Barcode (IMB)	
	2-Dimensional	PDF417, Micro PDF417, Truncated PDF417, Maxicode™, Data Matrix, QR Code, Composite Symbology	
COMMUNICATION INTERFACES			
I/F-1 (PCI Bus):	1 per printer: RS232C (9-pin); USB; Ethernet		
I/F-2 (Std. Interface):	1 per printer: IEEE1284 (Parallel); RS232C (25-pin); USB; Ethernet (10BaseT/100BaseTX auto-switching); Wireless LAN (802.11g); RS422/485		
EXT Port (Applicator Interface)	14-Pin Centronics style connector (opt. 25-pin D-sub)		
OPERATING CHARACTERISTICS			
Power Requirements	100 - 240 VAC (+/- 10%); 50/60 Hz; Auto-Switching		
Environment	Operating	41° - 104°F (5° - 40°C); 15% - 85% RH, non-condensing	
	Storage	0° - 140°F (-20° - 60°C); 15% - 85% RH, non-condensing	
Dimensions	9.7" (245 mm) W x 16.1" (408 mm) D x 11.8" (300 mm) H		
Weight	35.2 lbs. (16.0 kg) Standard Configuration		

*Specifications subject to change without notice

Label Gallery 3 - Label Design Software

LG EASY - Entry-Level

- Entry-level labeling software
- Linear and Standard 2D barcodes
- Wizard-based basic barcode labeling



LG PLUS - Advanced

- Advanced & compliance label design
- RFID support (HF & UHF/EPC)
- Complete database support
- API programming interface (ActiveX, .NET)
- Downloading to memory
- VB scripting
- System management (user login, reprint support)
- Print only version



LG TRUE PRO with WinCE

- All features of Plus Version
- RFID support (HF & UHF/EPC)
- Middleware integration module
- Creating standalone label applications
- Mobile wireless printing (WinCE support)
- Network version
- Label format export (SAP R/3 ITF, XML)
- Programming integration option



SATO America, Inc.

10350-A Nations Ford Road, Charlotte, NC 28273
 Phone: (704) 644-1650 Fax: (704) 644-1662
 E-mail: satosales@satoamerica.com